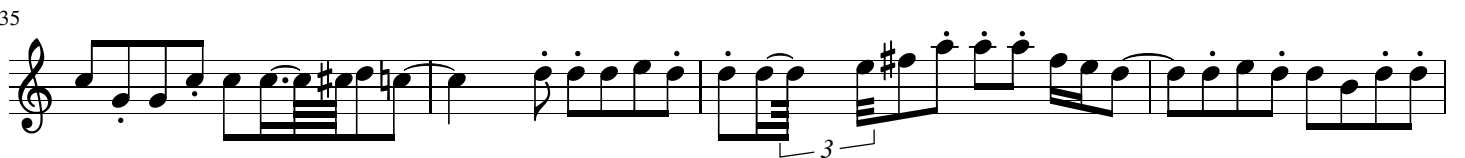
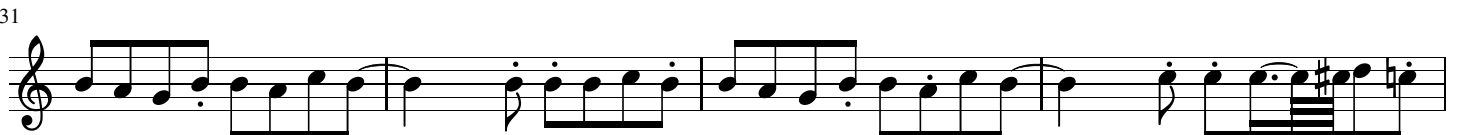
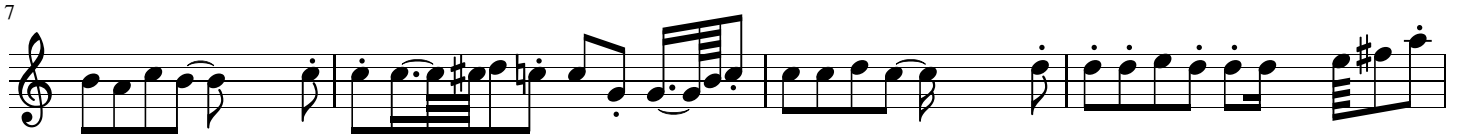
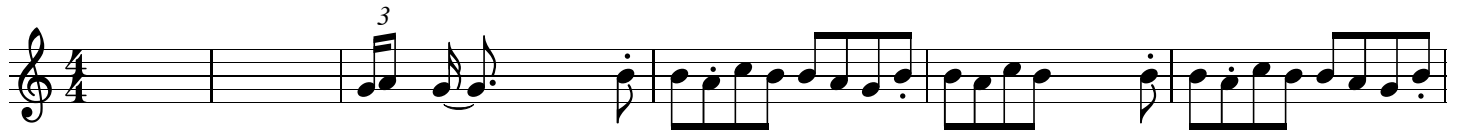


Dio è Morto

Francesco Guccini



49

Musical staff 49, starting with a treble clef. The staff contains a sequence of notes and rests. A triplet of eighth notes is marked with a '3' and a bracket. A measure later, a triplet of eighth notes is marked with 'L 3'. The staff ends with a double bar line.

55

Musical staff 55, starting with a treble clef. The staff contains a sequence of notes and rests. A triplet of eighth notes is marked with a '3' and a bracket. The staff ends with a double bar line.

60

Musical staff 60, starting with a treble clef. The staff contains a sequence of notes and rests. The staff ends with a double bar line.

65

Musical staff 65, starting with a treble clef. The staff contains a sequence of notes and rests. The staff ends with a double bar line.

71

Musical staff 71, starting with a treble clef. The staff contains a sequence of notes and rests. The staff ends with a double bar line.

77

Musical staff 77, starting with a treble clef. The staff contains a sequence of notes and rests. The staff ends with a double bar line.