

Sette Posizioni Trombone Chiave di basso

by Paolo Puglisi

♩ = 120

Trombone

1 2 3 4 5 6 7

mf
4
SOL
3
LAb
2
LA
1
SIb

8 9 10 11 12 13 14

7 6 5 4 3 2 1
MI FA SOLb/FA# SOL LAb LA SIb

15 16 17 18 19 20 21

7 6 5 4 3 2 1
SI DO REb/DO# RE MIb MI FA

22 23 24 25 26 27 28

7 6 5 4 3 2 1
MI FA FA#/SOLb SOL LAb LA SIb

29 30 31 32 33 34 35

7 6 5 4 3 2 1
SOL#/LAb LA SIb SI DO DO#/REb RE

36 37 38 39 40 41 42

7 6 5 4 3 2 1
SI DO DO#/REb RE MIb MI FA

43 44 45 46 47 48 49

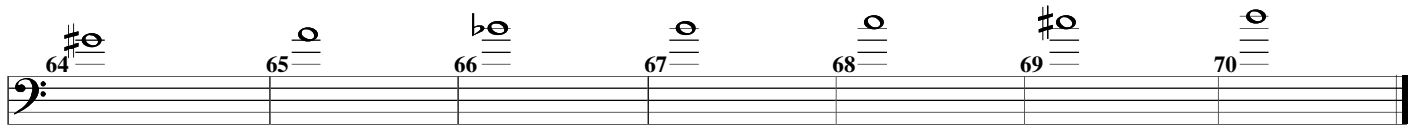
7 6 5 4 3 2 1
RE MIb FAb FA FA#/SOLb SOL SOL#/LAb

50 51 52 53 54 55 56

7 6 5 4 3 2 1
MI FA FA#/SOLb SOL SOL#/LAb LA SIb

57 58 59 60 61 62 63

7 6 5 4 3 2 1
FA# SOL SOL#/LAb LA LA#/SIb SI DO



7
SOL#/LAb

6
LA

5
LA#/SIb

4
SI

3
DO

2
DO#/REb

1
RE