

# In trattoria

Concato

Musical score for 'In trattoria' in 4/4 time, marked 'Concato'. The score consists of ten staves of music, numbered 1 through 30. The key signature is one sharp (F#). The piece features a variety of rhythmic patterns, including eighth and sixteenth notes, and rests. Notable features include:

- Staff 1: Starts with a quarter note, followed by eighth notes, and ends with a triplet of eighth notes.
- Staff 5: Features a triplet of eighth notes.
- Staff 10: Features a triplet of eighth notes.
- Staff 14: Features a triplet of eighth notes.
- Staff 17: Features a complex rhythmic pattern with many beamed eighth notes.
- Staff 20: Features a complex rhythmic pattern with many beamed eighth notes.
- Staff 22: Features a complex rhythmic pattern with many beamed eighth notes.
- Staff 24: Features a triplet of eighth notes and a triplet of sixteenth notes.
- Staff 26: Features a triplet of eighth notes, a triplet of sixteenth notes, and a quintuplet of eighth notes.
- Staff 30: Features a triplet of eighth notes.

34



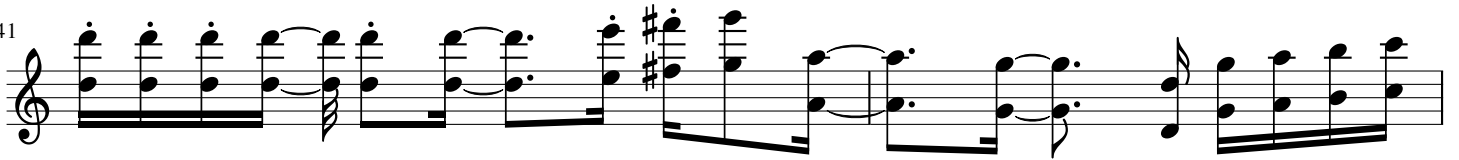
37



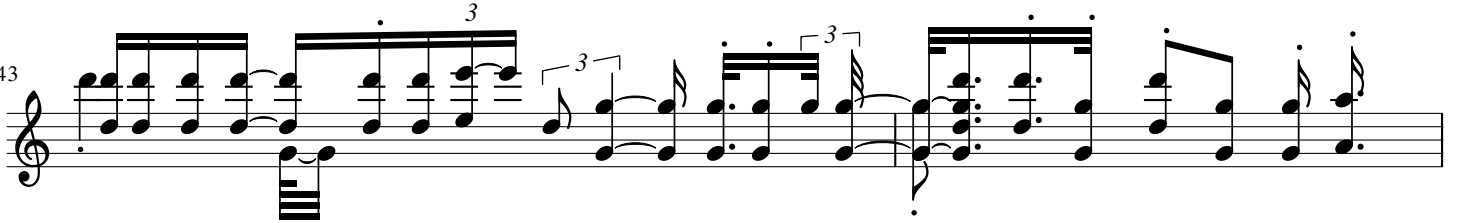
39



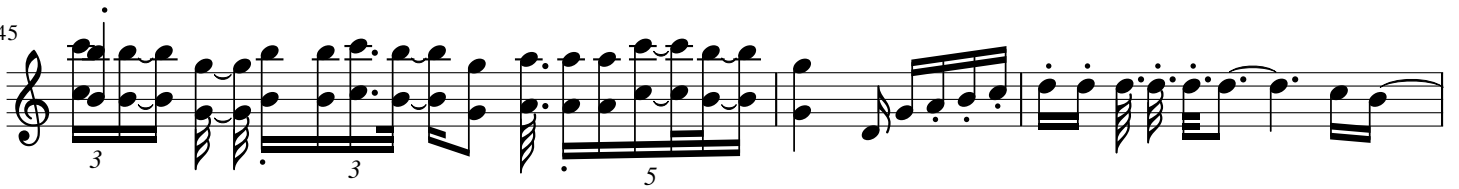
41



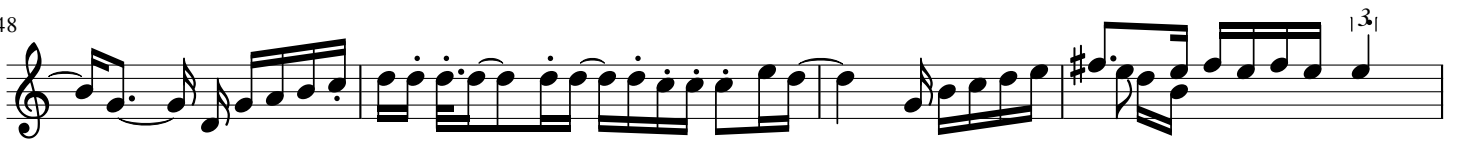
43



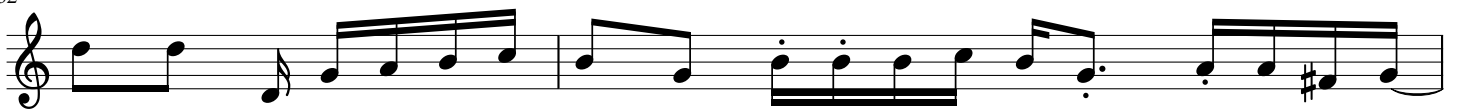
45



48



52



54

