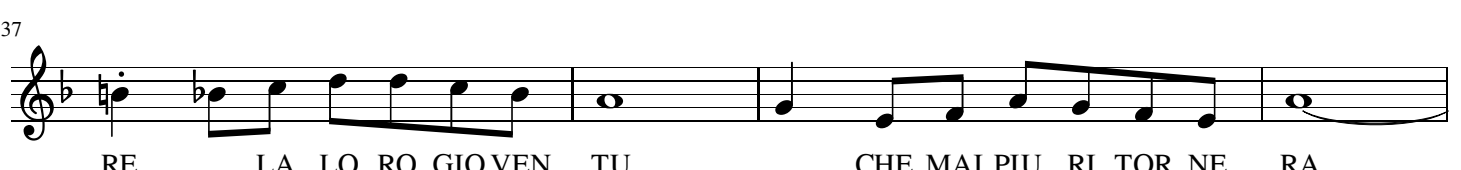
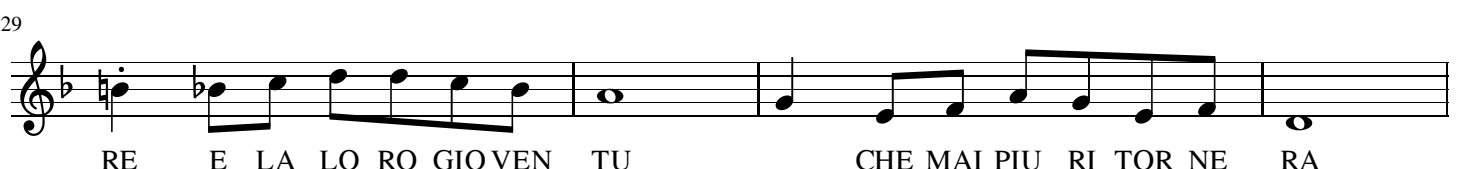
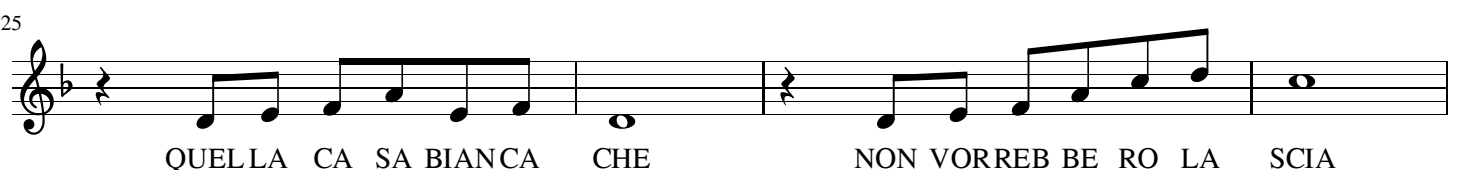
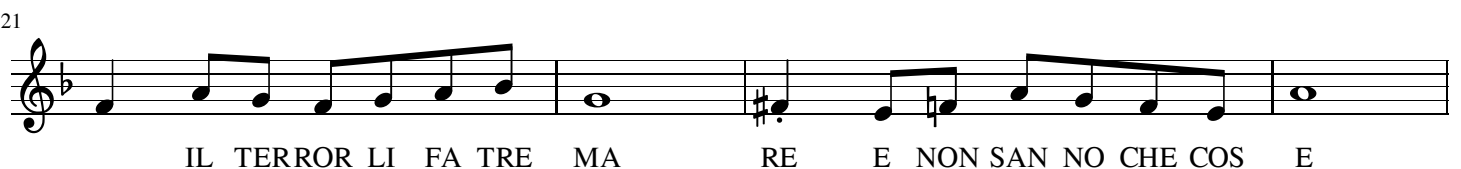
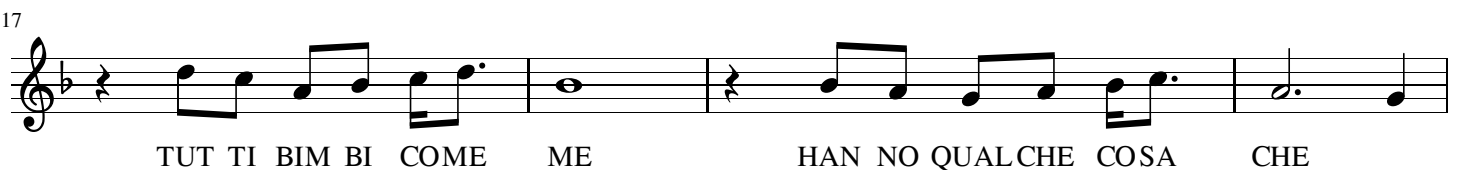
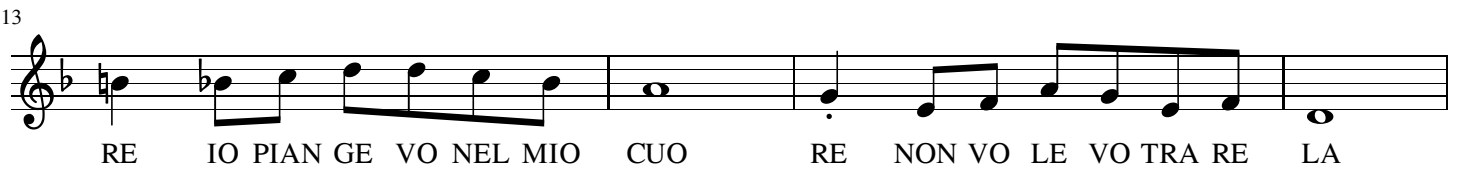
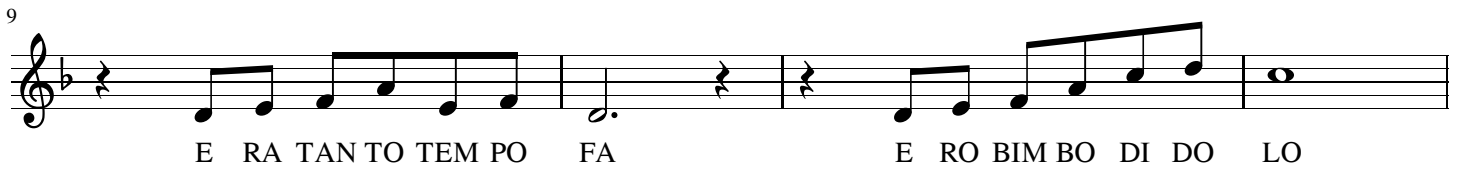
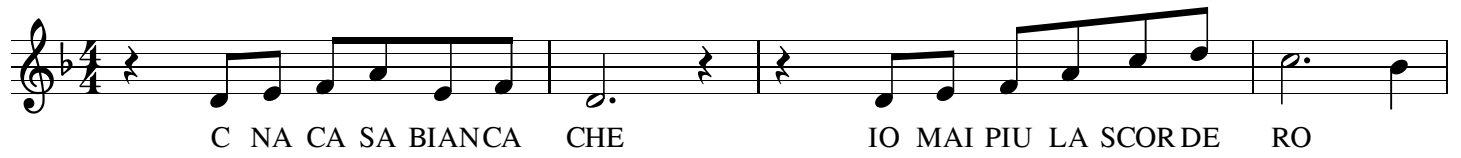


Casa Bianca

Marisa Sannia



CHE MAI PIU RI TOR NE RA

The image shows a single line of musical notation on a five-line staff. The notation begins with a treble clef and a key signature of one flat (B-flat). The melody consists of the following notes: a half note G4, a quarter note A4, a quarter note B4, a quarter note C5, a quarter note D5, a quarter note E5, a quarter note F5, a quarter note G5, a quarter note F5, a quarter note E5, a quarter note D5, a quarter note C5, a quarter note B4, a quarter note A4, a quarter note G4, and a quarter note F4. The lyrics 'CHE MAI PIU RI TOR NE RA' are written below the notes, with each syllable aligned under its corresponding note. A slur is placed over the notes for 'RI TOR NE RA'.